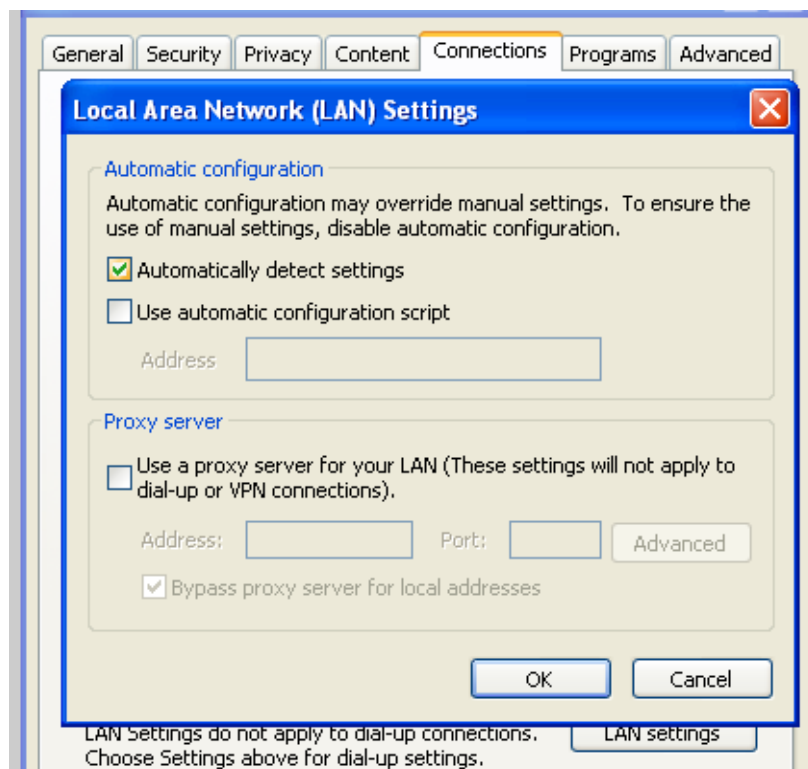


Wireless Internet

Wireless Internet is now available in most parts of the school.

When you do a wireless scan from your laptop, be sure to select the network named **OPEN** as this requires no network key.

To access the Internet, go to **Tools** then **Internet Options** in Internet Explorer. Click on the **Connections** tab, then on **LAN Settings**.



Make sure that **Automatically detect settings** is ticked, then click **OK** twice. You should now be able to visit websites.

To access your network **My Documents**, type **ftp.home.keqms.co.uk** into an Explorer window (not Internet Explorer), then enter your username/password. You will then be able to copy items from your laptop to your network area, and from your network area to your laptop. You won't be able to edit documents without first copying them to your laptop.